

# Simultaneous Localisation and Mapping (SLAM)

## Part 2: State of the Art

Tim Bailey and Hugh Durrant-Whyte

*Abstract*—This tutorial provides an introduction to the Simultaneous Localisation and Mapping (SLAM) method and the extensive research on SLAM that has been undertaken. Part I of this tutorial described the essential SLAM problem. Part II of this tutorial (this paper) is concerned with recent advances in computational methods and in new formulations of the SLAM problem for large scale and complex environments.

### I. Introduction

SLAM is the process by which a mobile robot can build a map of the environment and at the same time use this map to compute its location. The past decade has seen rapid and exciting progress in solving the SLAM problem together with many compelling implementations of SLAM methods. The great majority of work has focused on improving computational efficiency while ensuring consistent and accurate estimates for the map and vehicle pose. However, there has also been much research on issues such as non-linearity, data association and landmark characterisation, all of which are vital in achieving a practical and robust SLAM implementation.

This tutorial focuses on the recursive Bayesian formulation of the SLAM problem in which probability distributions or estimates of absolute or relative locations of landmarks and vehicle pose are obtained. Part I of this tutorial surveyed the development of the essential SLAM algorithm in state-space and particle-filter form, described a number of key implementations and cited locations of source code and real-world data for evaluation of SLAM algorithms. Part II of this tutorial (this paper), surveys the current state of the art in SLAM research with a focus on three key areas; computational complexity, data association, and environment representation. Much of the mathematical notation and essential concepts used in this paper are defined in Part I of this tutorial and so are not repeated here.

SLAM, in its naive form, scales quadratically with the number of landmarks in a map. For real-time implementation, this scaling is potentially a substantial limitation in the use of SLAM methods. Section II surveys the many approaches that have been developed to reduce this complexity. These include linear-time state augmentation, sparsification in information form, partitioned updates and submapping methods. A second major hurdle to overcome in implementation of SLAM methods is to correctly as-

sociate observations of landmarks with landmarks held in the map. Incorrect association can lead to catastrophic failure of the SLAM algorithm. Data association is particularly important when a vehicle returns to a previously mapped region after a long excursion; the so-called ‘loop-closure’ problem. Section III surveys current data association methods used in SLAM. These include batch-validation methods that exploit constraints inherent in the SLAM formulation, appearance-based methods, and multi-hypothesis techniques. The third development discussed in this tutorial is the trend towards richer appearance-based models of landmarks and maps. While initially motivated by problems in data association and loop closure, these methods have resulted in qualitatively different methods of describing the SLAM problem; focusing on trajectory estimation rather than landmark estimation. Section IV surveys current developments in this area along a number of lines including delayed mapping, the use of non-geometric landmarks, and trajectory estimation methods.

SLAM methods have now reached a state of considerable maturity. Future challenges will centre on methods enabling large scale implementations in increasingly unstructured environments and especially in situations where GPS-like solutions are unavailable or unreliable; in urban canyons, under foliage, underwater or on remote planets.

### II. Computational Complexity

The state-based formulation of the SLAM problem involves the estimation of a joint state composed of a robot pose and the locations of observed stationary landmarks. This problem formulation has a peculiar structure; the process model only affects vehicle pose states and the observation model only makes reference to a single vehicle-landmark pair. A wide range of techniques have been developed to exploit this special structure in limiting the computational complexity of the SLAM algorithm.

Techniques aimed at improving computational efficiency may be characterised as being optimal or conservative. Optimal algorithms aim to reduce required computation while still resulting in estimates and covariances which are equal to the full-form SLAM algorithm (as presented in Part I of this tutorial). Conservative algorithms result in estimates which have larger uncertainty or covariance than the optimal result. Usually conservative algorithms, while less accurate, are computationally more efficient and therefore of value in real implementations. Algorithms with uncertainties or covariances less than those of the optimal solution are termed inconsistent and are considered invalid

solutions to the SLAM (or any estimation) problem.

The direct approach to reducing computational complexity involves exploiting the structure of the SLAM problem in re-formulating the essential time and observation update equations to limit required computation. The time-update computation can be limited using *state-augmentation* methods. The observation-update computation can be limited using a *partitioned form* of the update equations. Both these steps result in an optimal SLAM estimate with reduced computation. Re-formulation of the standard space-space SLAM representation into information form allows *sparsification* of the resulting information matrix to be exploited in reducing computation. The resulting algorithms are conservative but still yield good estimates with much reduced computational effort. *Submapping* methods exploit the idea that a map can be broken up into regions with local coordinate systems and arranged in a hierarchical manner. Updates can occur in a local frame with periodic inter-frame updates. Submapping techniques generally provide a conservative estimate in the global frame.

## A. State Augmentation

At a time  $k$ , the joint SLAM state vector  $\mathbf{x}_k = [\mathbf{x}_{v_k}^T, \mathbf{m}^T]^T$  comprises two parts; the robot pose  $\mathbf{x}_{v_k}$  and the set of map landmark locations  $\mathbf{m}$ . The vehicle model propagates only the pose states according to a set of control inputs  $\mathbf{u}_k$  while leaving the map states unchanged:

$$\begin{aligned} \mathbf{x}_k &= \mathbf{f}(\mathbf{x}_{k-1}, \mathbf{u}_k) \\ &= \begin{bmatrix} \mathbf{f}_v(\mathbf{x}_{v_{k-1}}, \mathbf{u}_k) \\ \mathbf{m} \end{bmatrix} \end{aligned} \quad (1)$$

In a naive implementation of the extended Kalman filter (EKF) for SLAM, the covariance prediction is computed from

$$\mathbf{P}_{k|k-1} = \nabla \mathbf{f}_x \mathbf{P}_{k-1|k-1} \nabla \mathbf{f}_x^T + \nabla \mathbf{f}_u \mathbf{U}_k \nabla \mathbf{f}_u^T \quad (2)$$

where  $\nabla \mathbf{f}_x = \frac{\partial \mathbf{f}}{\partial \mathbf{x}_{k-1}}$ ,  $\nabla \mathbf{f}_u = \frac{\partial \mathbf{f}}{\partial \mathbf{u}_k}$  and  $\mathbf{U}_k$  is a covariance characterising uncertainty on the control vector. This operation has cubic complexity in the number of landmarks due to matrix multiplication of the Jacobian  $\nabla \mathbf{f}_x$  and the covariance matrix  $\mathbf{P}_{k-1|k-1}$ . However, as only the pose states are affected by the vehicle model, the covariance prediction can be re-written in a form which has linear complexity in the number of landmarks [53, Section 2.4.1]:

$$\mathbf{P}_{k|k-1} = \begin{bmatrix} \nabla \mathbf{f}_{v_x} \mathbf{P}_{vv} \nabla \mathbf{f}_{v_x}^T + \nabla \mathbf{f}_{v_u} \mathbf{U}_k \nabla \mathbf{f}_{v_u}^T & \nabla \mathbf{f}_{v_x} \mathbf{P}_{vm} \\ \mathbf{P}_{vm}^T \nabla \mathbf{f}_{v_x}^T & \mathbf{P}_{mm} \end{bmatrix} \quad (3)$$

where  $\nabla \mathbf{f}_{v_x} = \frac{\partial \mathbf{f}_v}{\partial \mathbf{x}_{v_{k-1}}}$ ,  $\nabla \mathbf{f}_{v_u} = \frac{\partial \mathbf{f}_v}{\partial \mathbf{u}_k}$  and where

$$\mathbf{P}_{k-1|k-1} = \begin{bmatrix} \mathbf{P}_{vv} & \mathbf{P}_{vm} \\ \mathbf{P}_{vm}^T & \mathbf{P}_{mm} \end{bmatrix}$$

The process of adding a new landmark to the state vector has a similar form. A new map landmark is initialised as

a function of the robot pose and an observation  $\mathbf{z}_k$ .

$$\mathbf{m}_{new} = \mathbf{g}(\mathbf{x}_{v_k}, \mathbf{z}_k) \quad (4)$$

The augmented states are then a function of only a small number of existing states

$$\mathbf{x}_k^+ = \begin{bmatrix} \mathbf{x}_{v_k} \\ \mathbf{m} \\ \mathbf{g}(\mathbf{x}_{v_k}, \mathbf{z}_k) \end{bmatrix} \quad (5)$$

The general idea of state augmentation can be applied whenever new states are a function of a subset of existing states

$$\begin{bmatrix} \mathbf{x}_1 \\ \mathbf{x}_2 \\ \mathbf{f}(\mathbf{x}_2, \mathbf{q}) \end{bmatrix} \quad (6)$$

$$\begin{bmatrix} \mathbf{P}_{11} & \mathbf{P}_{12} & \mathbf{P}_{12} \nabla \mathbf{f}_{x_2}^T \\ \mathbf{P}_{12}^T & \mathbf{P}_{22} & \mathbf{P}_{22} \nabla \mathbf{f}_{x_2}^T \\ \nabla \mathbf{f}_{x_2} \mathbf{P}_{12}^T & \nabla \mathbf{f}_{x_2} \mathbf{P}_{22} & \nabla \mathbf{f}_{x_2} \mathbf{P}_{22} \nabla \mathbf{f}_{x_2}^T + \nabla \mathbf{f}_q \mathbf{Q} \nabla \mathbf{f}_q^T \end{bmatrix} \quad (7)$$

A comparison of Equations 1 and 3 with Equations 6 and 7, show that the SLAM prediction step is a special case of state augmentation; in which the state is augmented by the new pose  $\mathbf{x}_{v_k}$ , and where the previous pose  $\mathbf{x}_{v_{k-1}}$  is removed by marginalisation. In this form, both the EKF prediction step and the process of adding new landmarks can be reduced to calculations that are linear in the number of landmarks. The predictions made are clearly optimal.

## B. Partitioned Updates

A naive implementation of the SLAM observation-update step updates all vehicle and map states every time a new measurement is made. For an EKF update, the computational effort scales quadratically with the number of landmarks held in the map. A number of partitioned update methods have been devised to reduce this computational effort. These confine sensor-rate updates to a small local region and update the global map only at a much lower frequency. These partition methods all produce optimal estimates.

There are two basic types of partitioned update. The first operates in a local region of the global map and maintains globally referenced coordinates. This approach is taken by the compressed EKF (CEKF) [21] and the postponement algorithm [28]. The second generates a short-term submap with its own local coordinate frame. This is the approach of the constrained local submap filter (CLSF) [53] and the local map sequencing algorithm [45]. We focus on this latter approach as it is simpler and, by performing high-frequency operations in a local coordinate frame, it avoids very large global covariances and so is more numerically stable and less affected by linearisation errors.

The local submap algorithm maintains at all times two independent SLAM estimates

$$\mathbf{x}_G = \begin{bmatrix} \mathbf{x}_G^R \\ \mathbf{m}_G \end{bmatrix}, \quad \mathbf{x}_R = \begin{bmatrix} \mathbf{x}_v^R \\ \mathbf{m}_R \end{bmatrix}, \quad (8)$$

where  $\mathbf{x}_G$  is a map composed of a set of globally referenced landmarks  $\mathbf{m}_G$  together with the global reference pose of a submap coordinate frame  $\mathbf{x}_F^G$ , and where  $\mathbf{x}_R$  is the local submap with a locally referenced vehicle pose  $\mathbf{x}_v^R$  and locally referenced landmarks  $\mathbf{m}_R$  as shown in Figures 1(a) and 1(b), respectively.

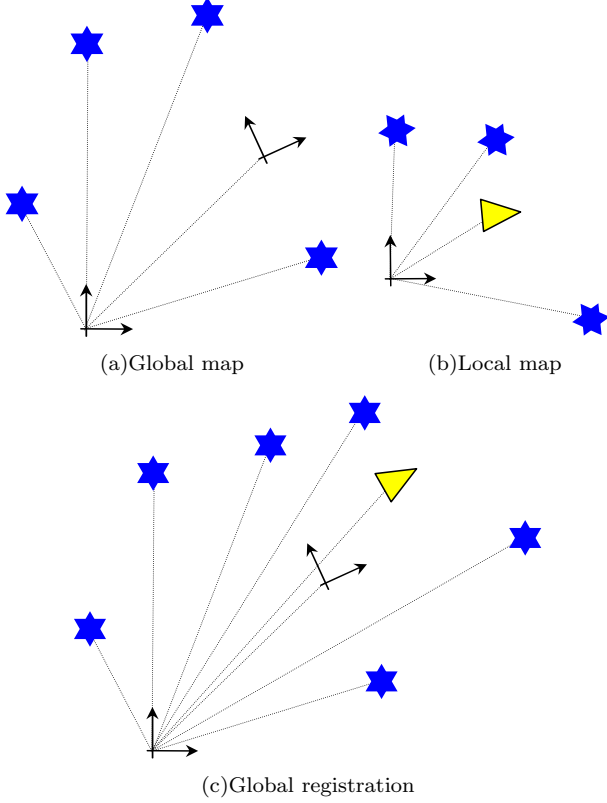


Fig. 1. The constrained local submap filter. The SLAM frontier is constructed in a local map (b) which periodically registers with a global map (a) to produce an optimal global estimate (c).

As observations are made, conventional SLAM updates are performed entirely within the local submap and with only those landmarks held in the local submap. It is possible to obtain a global vehicle pose estimate at any time by simple vector summation of the locally referenced pose and the global estimate of the submap coordinate frame. An optimal global estimate is obtained periodically by registering the submap with the global map, see Figure 1(c), and applying constraint updates upon any features common to both maps. At this point a new submap is created and the process continues.

The submap method has a number of advantages. First, the number of landmarks that need to be updated at any one time is limited to only those that are described in the local submap coordinate frame. Thus, the observation-rate update is independent of the total map size. The full update, and propagation of local estimates, can be carried out as a background task at a much lower update rate while still permitting observation-rate global localisation. A second advantage is that there is lower uncertainty in a locally referenced frame so approximations due to linearisation are

reduced. Finally, submap registration can use batch validation gating, so improving association robustness.

### C. Sparsification

Conventional EKF-SLAM produces a state estimate  $\hat{\mathbf{x}}_k$  and covariance matrix  $\mathbf{P}_k$  which implicitly describe the first two central moments of a Gaussian probability density on the true state  $\mathbf{x}_k$ . An alternative representation for this same Gaussian is in canonical or information form using the information vector  $\hat{\mathbf{y}}_k$  and information matrix  $\mathbf{Y}_k$ . These are related to the moment form parameters as

$$\mathbf{Y}_k = \mathbf{P}_k^{-1} \quad (9)$$

$$\hat{\mathbf{y}}_k = \mathbf{Y}_k \hat{\mathbf{x}}_k \quad (10)$$

The advantage of the information form for SLAM is that, for large-scale maps, many of the off-diagonal components of the *normalised* information matrix are very close to zero. Thrun *et al.* [47], [48] have exploited this observation to propose a sparsification procedure which allows near zero elements of the normalised information matrix to be set to zero. With the information matrix now sparse, very efficient update procedures for information estimates can be obtained with relatively little loss in optimality of the maps produced. Although this initial solution was subsequently shown not to be consistent by Eustice *et al.* [17], the idea of sparsification has sparked considerable interest in the information form SLAM problem and several consistent sparse solutions [42], [19], [18], [50], [12], [52] have been presented. Of particular note are those solutions that are optimal and exactly sparse [19], [18], [12].

The key to exact sparsification of the information form of the SLAM problem is to notice that state augmentation is a sparse operation. Consider the moment-form augmentation identity in Equations 6 and 7. These have an equivalent information-form identity.

$$\begin{bmatrix} \mathbf{y}_1 \\ \mathbf{y}_2 - \nabla \mathbf{f}_{\mathbf{x}_2}^T \mathbf{Q}^{-1} [\mathbf{f}(\mathbf{x}_2) - \nabla \mathbf{f}_{\mathbf{x}_2} \mathbf{x}_2] \\ \mathbf{Q}^{-1} [\mathbf{f}(\mathbf{x}_2) - \nabla \mathbf{f}_{\mathbf{x}_2} \mathbf{x}_2] \end{bmatrix} \quad (11)$$

$$\begin{bmatrix} \mathbf{Y}_{11} & \mathbf{Y}_{12} & \mathbf{0} \\ \mathbf{Y}_{12}^T & \mathbf{Y}_{22} + \nabla \mathbf{f}_{\mathbf{x}_2}^T \mathbf{Q}^{-1} \nabla \mathbf{f}_{\mathbf{x}_2} & -\nabla \mathbf{f}_{\mathbf{x}_2}^T \mathbf{Q}^{-1} \\ \mathbf{0} & -\mathbf{Q}^{-1} \nabla \mathbf{f}_{\mathbf{x}_2} & \mathbf{Q}^{-1} \end{bmatrix} \quad (12)$$

where, for simplicity, it is assumed that noise is zero-mean additive  $\mathbf{f}(\mathbf{x}_2, \mathbf{q}) = \mathbf{f}(\mathbf{x}_2) + \mathbf{q}$ . Assuming the subset of states  $\mathbf{x}_1$  comprises the bulk of the map states, then Equation 12 is sparse and has constant-time complexity, compared to Equation 7 which has linear complexity in the dimension of  $\mathbf{x}_1$ .

Therefore, in the information form SLAM problem, an exactly sparse solution can be obtained by augmenting the state with the new vehicle pose estimate at each time-step and retaining all past robot poses,

$$\mathbf{x}_k = [\mathbf{x}_{v_k}^T, \mathbf{x}_{v_{k-1}}^T, \dots, \mathbf{x}_{v_1}^T, \mathbf{m}^T]^T. \quad (13)$$

In this way, the off-diagonal terms of the information matrix are non-zero only for poses and landmarks that are

directly related by measurement data (see Figure 2(a)). Observation updates are also a sparse operation, producing links only between measured states.

However, marginalisation, which is necessary to remove past pose states, introduces links between all state elements connected to the removed states. Marginalising all past states produces a dense information matrix as shown in Figure 2(c). Nevertheless, it is possible to retain a reasonably sparse estimate without having to keep an entire pose history [19]. By judicious selection of anchoring poses to decouple different regions of the map, a great proportion of poses can be marginalised away without inducing excessive density as shown in Figure 2(b).

Despite the attraction of its sparse representation, there remain serious caveats with regard to practical implementation of information form SLAM. For realistic use, it is necessary to recover the mean and covariance of the state at every timestep. This is potentially very expensive. The mean estimate is required to perform linearisation of the process and observation models. It can be recovered fairly efficiently using the conjugate gradients method [16]. The mean and covariance are both required to compute validation gates for data association. While efficient solutions have been devised for simple gating [48], [16], the robust batch gating methods described in Section III potentially involve recovery of the full covariance matrix, which has a cubic complexity in the number of landmarks.

## D. Global submaps

Submap methods are another means of addressing the issue of computation scaling quadratically with the number of landmarks during measurement updates. Submap methods come in two fundamental varieties: globally referenced and locally referenced as shown in Figure 3. The common thread to both types is that the submap defines a local coordinate frame and nearby landmarks are estimated with respect to the local frame. The local submap estimates are obtained using the standard, optimal, SLAM algorithm using only the locally referenced landmarks. The resulting submap structures are then arranged in a hierarchy leading to computational efficiency but also lack of optimality.

Global submap methods estimate the global locations of submap coordinate frames relative to a common base frame. This is the approach adopted in the relative landmark representation (RLR) [22], hierarchical SLAM [15], and constant time SLAM (CTS) [30] methods. These approaches reduce computation from a quadratic dependence on number of landmarks, to a linear or constant time dependence by maintaining a conservative estimate of the global map. However, as submap frames are located relative to a common base coordinate frame, global submaps do not alleviate linearisation issues arising from large pose uncertainties.

## E. Relative Submaps

Relative submap methods differ from global submaps in that there is no common coordinate frame. The location

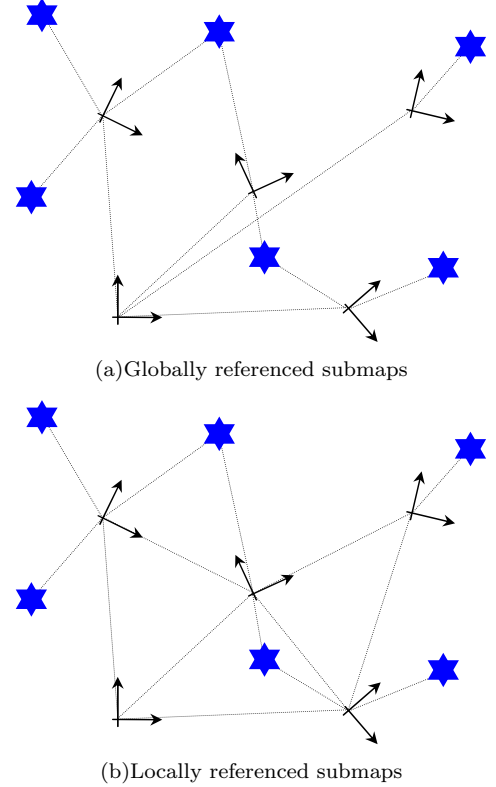


Fig. 3. Global and relative submaps.

of any given submap is recorded only by its neighbouring submaps, and these are connected in a graphical network. Global estimates can be obtained by vector summation along a path in the network. By eschewing any form of global-level data fusion, relative submaps address both computation and non-linearity issues.

The original notion of relative submaps was introduced by Chong and Kleeman [8]. This was further developed by Williams [53] in the form of the constrained relative submap filter (CRSF). However, CRSF does not exhibit global level convergence without forfeiting the decoupled submap structure. The Atlas framework [6], [7] and network coupled feature maps (NCFM) [2] rectified this problem by realising that conservative global convergence could be achieved using the covariance intersect algorithm [26] for estimating connections. These algorithms result in a network of optimal SLAM submaps connected by conservative links.

The relative submap framework has a number of advantages. In particular, it produces locally optimal maps with computational complexity independent of the size of the complete map. Further, by treating updates locally it is numerically very stable, allows batch association between frames and minimises problems arising from linearisation in a global frame.

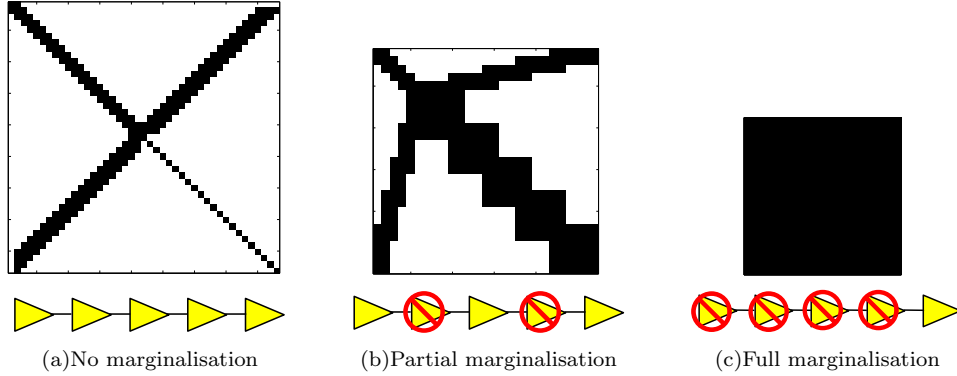


Fig. 2. Exact information matrix SLAM. These information matrices all represent optimal map estimates, but show the tradeoff between number of retained pose states and matrix sparsity.

### III. Data Association

Data association has always been a critical issue for practical SLAM implementations. Before fusing data into the map, new measurements are associated with existing map landmarks and, after fusion, these associations cannot be revised. The problem is that a single incorrect data association can induce divergence into the map estimate, often causing catastrophic failure of the localisation algorithm. SLAM algorithms will be fragile when one hundred percent correct associations are mandated for correct operation.

#### A. Batch Validation

Almost all SLAM implementations perform data association using only statistical validation gating, a method inherited from the target-tracking literature for culling unlikely associations [4]. Early SLAM implementations considered each measurement-to-landmark association individually by testing whether an observed landmark is close to a predicted location. Individual gating is extremely unreliable if the vehicle pose is very uncertain and fails in all but the most sparsely populated and structured environments.

An important advance was the concept of batch gating, where multiple associations are considered simultaneously. Mutual association compatibility exploits the geometric relationship between landmarks. The two existing forms of batch gating are the joint compatibility branch and bound (JCBB) [37] method which is a tree-search, and combined constraint data association (CCDA) [2], which is a graph search (see Figure 4). The latter, and also a randomised variant of JCBB [38], are able to perform reliable association with no knowledge of vehicle pose whatsoever.

Batch gating alone is often sufficient to achieve reliable data association: If the gate is sufficiently constrained, association errors have insignificant effect [5], and if a false association is made with an incorrect landmark which is physically close to right one, then the inconsistency is minor. This may not always be valid and, especially in large complex environments, more comprehensive data association mechanisms (such as multi-hypothesis tracking [4]) may be necessary.

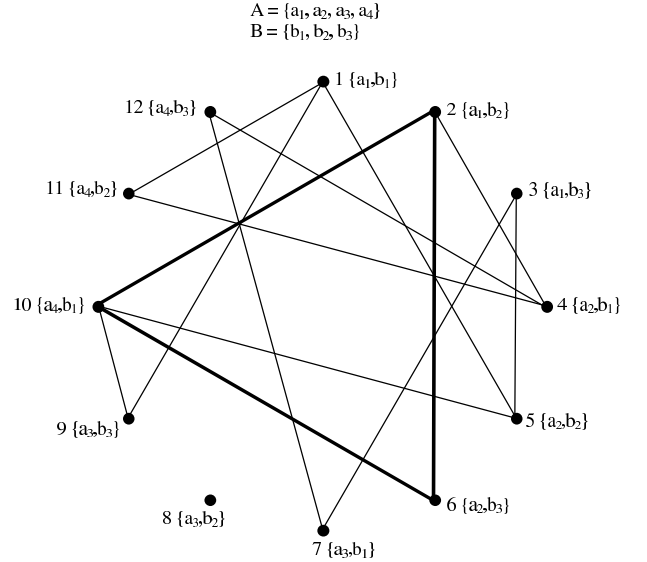


Fig. 4. Combined constraint data association (CCDA) performs batch validation gating by constructing and searching a correspondence graph. The graph nodes represent associations that are possible when considered individually. The edges indicate compatible associations, and a clique is a set of mutually compatible associations (e.g., the clique 2, 6, 10 implies associations  $a_1 \rightarrow b_2, a_2 \rightarrow b_3, a_4 \rightarrow b_1$  may coexist).

#### B. Appearance Signatures

Gating on geometric patterns alone is not the only avenue for reliable data association. Many sensing modalities, such as vision, provide rich information about shape, colour and texture, all of which may be used to find a correspondence between two data sets. For SLAM, appearance signatures are useful to predict a possible association, such as closing a loop, or for assisting conventional gating by providing additional discrimination information.

Historically, appearance signatures and image similarity metrics have been developed for indexing image databases [43] and for recognising places in topological mapping [1], [49]. More recently, appearance measures have been applied to detecting loops in SLAM [23], [39]. The work on visual appearance signatures for loop detection by Newman *et al.* [39] introduces two significant innovations. A

similarity metric over a sequence of images, rather than a single image, is computed and an eigenvalue technique is employed to remove common-mode similarity. This approach considerably reduces the occurrence of false positives by considering only matches that are interesting or uncommon.

### C. Multi-hypothesis data association

Multi-hypothesis data association is essential for robust target tracking in cluttered environments [4]. It resolves association ambiguities by generating a separate track estimate for each association hypothesis, creating over time an ever branching tree of tracks. The number of tracks is typically limited by the available computational resources and low likelihood tracks are pruned from the hypothesis tree.

Multi-hypothesis tracking (MHT) is also important for robust SLAM implementation, particularly in large complex environments. For example in loop closure, a robot should ideally maintain separate hypotheses for suspected loops, and also a “no-loop” hypothesis for cases where the perceived environment is structurally similar. While MHT has been applied to mapping problems [9], this has yet to be applied in the SLAM context. A major hurdle is the computational overhead of maintaining separate map estimates for each hypothesis. Tractable solutions may be possible using sparsification or submap methods. The FastSLAM algorithm is inherently a multi-hypothesis solution, with each particle having its own map estimate. A significant attribute of the FastSLAM algorithm is its ability to perform per-particle data association [36].

## IV. Environment Representation

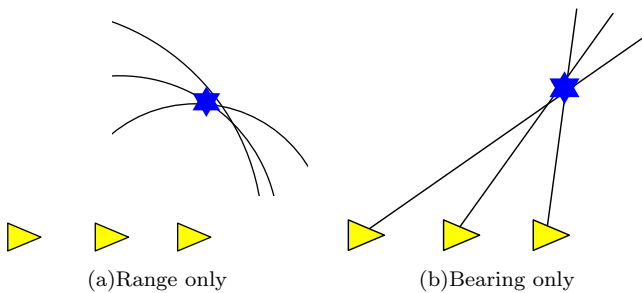


Fig. 5. *Partial observation. Some sensing modalities cannot directly observe a landmark location and require observations from multiple vantage points.*

Early work in SLAM assumed that the world could reasonably be modeled as a set of simple discrete landmarks described by geometric primitives such as points, lines or circles. In more complex and unstructured environments—outdoors, underground, subsea—this assumption often does not hold.

### A. Partial Observability and Delayed Mapping

Environment modeling depends both on the complexity of the environment and on the limitations of the sensing modality. Two common examples are sonar and vision. Sonar sensors typically produce accurate range measurements but often have large beam-width and side-lobes making the bearing estimate unusable [31]. Measurements from a single camera, on the other hand, provide bearing information without an accurate indication of range.

SLAM with range-only sensors [32], [33] and bearing-only sensors [11], [3] show that a single measurement is insufficient to constrain a landmark location. Rather it must be observed from multiple vantage points as shown in Figure 5. More precisely, a single measurement generates a non-Gaussian distribution over landmark location, and multiple measurements are needed to obtain an estimate. Generalised distributions, such as mixture models, permit immediate, non-delayed landmark tracking [44]. One way to obtain a Gaussian landmark estimate is to delay initialisation and instead accumulate raw measurement data. To permit consistent delayed fusion, it is necessary to record the vehicle pose for each deferred measurement. Thus, the SLAM state is augmented with recorded pose estimates

$$\mathbf{x}_k = [\mathbf{x}_{v_k}^T, \mathbf{x}_{v_{k-1}}^T, \dots, \mathbf{x}_{v_{k-n}}^T, \mathbf{m}^T]^T \quad (14)$$

and the corresponding measurements are stored in an auxiliary list  $\{\mathbf{z}_k, \dots, \mathbf{z}_{k-n}\}$ . Once sufficient information over a period  $n$  has been collected, a landmark is initialised by a batch update. Recorded poses that do not have any other associated measurements are then simply removed from the state.

Delayed fusion addresses far more than just partial observability. It is a general concept for increasing robustness by accumulating information and permitting delayed decision making. Given an accumulated data set, an improved estimate can be obtained by performing a batch update, such as bundle-adjustment [11] or iterated smoothing, which dramatically reduces linearisation errors. Deferred data also facilitates batch validation gating, and so aids reliable data association.

### B. Non-geometric landmarks

While EKF-SLAM is usually applied to geometric landmarks (often misnamed ‘point landmarks’), the simple expedient of attaching a coordinate frame to an arbitrary object allows the same methods to be applied to much more general landmark descriptions. A recent contribution by Nieto *et al.* [40] shows that landmarks of arbitrary shape may be dealt with by using EKF-SLAM to reconcile landmark locations separately from the estimation of shape parameters.

A landmark is described by a shape model which has an embedded coordinate frame defining the landmark origin as shown in Figure 6(a). This model is auxiliary to the SLAM process, and may have any representation that



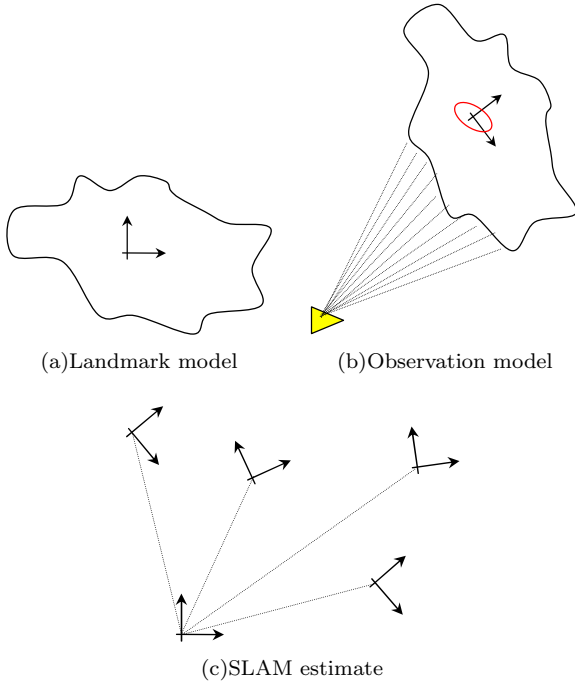


Fig. 6. SLAM with arbitrary shaped landmarks. Aligning a shape model with sensed data produces a suitable observation model for SLAM.

permits data alignment (e.g., a grid). When the robot observes the landmark, the shape model is aligned with the measurement data as shown in Figure 6(b). Assuming this alignment is approximately Gaussian, the vehicle-centric estimate of the model coordinate frame is an observation suitable for an EKF-SLAM update, where the map is composed of landmark frame locations as in Figure 6(c).

### C. 3-D SLAM

Implementing SLAM in 3-D is, in principle, a straightforward extension of the 2-D case. However, it involves significant added complexity due to the more general vehicle motion model and, most importantly, greatly increased sensing and feature modeling complexity.

There exist three essential forms of 3-D SLAM. The first is simply 2-D SLAM with additional map building capabilities in the third dimension. For example, horizontal laser-based SLAM with a second orthogonal laser mapping vertical slices [46], [35]. This approach is appropriate when the vehicle motion is confined to a plane. The second form is a direct extension of 2-D SLAM to 3-D, with the extraction of discrete landmarks and joint estimation of the map and vehicle pose. This has been implemented with monocular vision sensing by Davison *et al.* [10], and permits full six degree-of-freedom motion (see also [27] for an airborne application). The third form involves an entirely different SLAM formulation, where the joint state is composed of a history of past vehicle poses [16], [39]. At each pose, the vehicle obtains a 3-D scan of the environment and the pose estimates are aligned by correlating the scans.

### D. Trajectory-Oriented SLAM

The standard SLAM formulation, as described in Part I of this tutorial, defines the estimated state as the vehicle pose and a list of observed landmarks

$$\mathbf{x}_k = [\mathbf{x}_{v_k}^T, \mathbf{m}^T]^T. \quad (15)$$

An alternative formulation of the SLAM problem that has gained recent popularity is to estimate the vehicle trajectory instead,

$$\mathbf{x}_k = [\mathbf{x}_{v_k}^T, \mathbf{x}_{v_{k-1}}^T, \dots, \mathbf{x}_{v_1}^T]^T. \quad (16)$$

This formulation is particularly suited to environments where discrete identifiable landmarks are not easily discerned and direct alignment of sensed data is simpler or more reliable. Notice that the map is no longer part of the state to be estimated but rather forms an auxiliary data set. Indeed, this formulation of the SLAM problem has no explicit map, rather each pose estimate has an associated scan of sensed data, and these are aligned to form a global map. Figure 7 shows an example of this approach from [39].

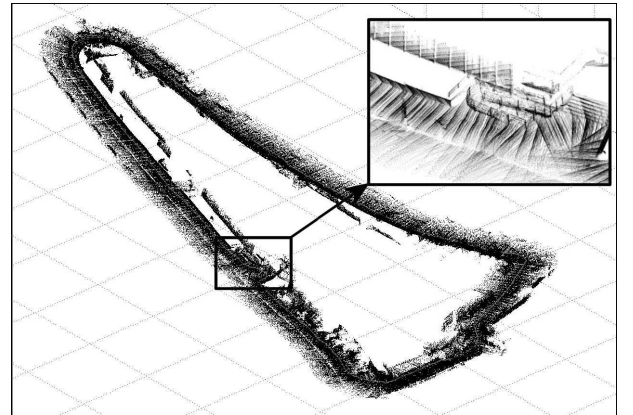


Fig. 7. Trajectory-based SLAM. Scans taken at each pose are aligned according to their pose estimate to form a global map. Picture courtesy of [39].

The FastSLAM algorithm may also be considered as an example of trajectory estimation, with each particle defining a particular trajectory hypothesis. Several recent FastSLAM hybrids use pose-aligned scans or grids in place of a landmark map [24], [14], [20]. Another variation of trajectory-based SLAM has developed from topological mapping [34], where poses are connected in a graphical network rather than a joint state vector. This framework, known as consistent pose estimation (CPE) [23], [29], is a promising alternative to state-space SLAM and is capable of producing large-scale maps. The advent of sparse information form SLAM has led to a third type of trajectory-based SLAM [12], [18], [39], with sparse estimation of Equation 16.

While trajectory SLAM has many positive characteristics, these come with caveats. Most importantly, its state-space grows unbounded with time, as does the quantity

of stored measurement data. For very long-term SLAM it will eventually become necessary to coalesce data into a format similar to the traditional SLAM map to bound storage costs.

### E. Embedded auxiliary information

Trajectory-based SLAM lends itself to representing spatially located information. Besides scan data for mapping, it is possible to associate auxiliary information with each pose; soil salinity, humidity, temperature, or terrain characteristics, for example. The associated information may be used to assist mapping, to aid data association, or for purposes unrelated to the mapping task, such as path planning or data gathering.

This concept of embedding auxiliary data is more difficult to incorporate within the traditional SLAM framework. The SLAM state is composed of discrete landmark locations and is ill suited to the task of representing dense spatial information. Nieto *et al.* [41] have devised a method called DenseSLAM to permit such an embedding. As the robot moves through the environment, auxiliary data is stored in a suitable data-structure, such as an occupancy grid, and the region represented by each grid-cell is determined by a set of local landmarks in the SLAM map. As the map evolves, and the landmarks move, the locality of the grid region is shifted and warped accordingly. The result is an ability to consistently maintain spatial locality of dense auxiliary information using the SLAM landmark estimates.

### F. Dynamic environments

Real world environments are not static. They contain moving objects, such as people, and temporary structures that appear static for a while but are later moved, such as chairs and parked cars. In dynamic environments, a SLAM algorithm must somehow manage moving objects. It can detect and ignore them; it can track them as moving landmarks; but it must not add a moving object to the map and assume it is stationary.

The conventional SLAM solution is highly redundant. Landmarks can be removed from the map without loss of consistency, and it is often possible to remove large numbers of landmarks with little change in convergence rate [13]. This property has been exploited to maintain a contemporaneous map by removing landmarks that have become obsolete due to changes in the environment [2, Section 5.1]. To explicitly manage moving objects, Hähnel *et al.* [25] implement an auxiliary identification routine, and then remove the dynamic information from a data scan before sending it to their SLAM algorithm. Conversely, Wang *et al.* [51] add moving objects to their estimated state, and provide models for tracking both stationary and dynamic targets. Simultaneous estimation of moving and stationary landmarks is very costly due to the added predictive model. For this reason, the implemented solution first involves a stationary SLAM update followed by separate tracking of moving targets.

## V. SLAM: Where to Next?

The SLAM method provides a solution to the key competency of mapping and localisation for any autonomous robot. The past decade in particular has seen substantial progress in our understanding of the SLAM problem and in the development of efficient, consistent and robust SLAM algorithms. The standard state-space approach to SLAM is now well understood and the main issues in representation, computation and association appear to be resolved. The information-form of the SLAM problem has significant unexplored potential in large-scale mapping, problems involving many vehicles, and potentially in mixed environments with sensor networks and dynamic landmarks. The delayed data fusion concept complements batch association and iterative smoothing to improve estimation quality and robustness. Appearance and pose-based SLAM methods offer a radically new paradigm for mapping and location estimation without the need for strong geometric landmark descriptions. These methods are opening up new directions and making links back to fundamental principles in robot perception.

The key challenges for SLAM are in larger and more persuasive implementations and demonstrations. While progress has been substantial, the scale and structure of many environments is limited. The challenge now is to demonstrate SLAM solutions to large problems where robotics can truly contribute: driving hundreds of kilometers under a forest canopy or mapping a whole city without recourse to GPS, and to demonstrate true autonomous localisation and mapping of structures such as the Barrier Reef or the surface of Mars. SLAM has brought these possibilities closer.

## References

- [1] S. Argamon-Engelson. Using image signatures for place recognition. *Pattern Recognition Letters*, 19:941–951, 1998.
- [2] T. Bailey. *Mobile Robot Localisation and Mapping in Extensive Outdoor Environments*. PhD thesis, University of Sydney, Australian Centre for Field Robotics, 2002.
- [3] T. Bailey. Constrained initialisation for bearing-only SLAM. In *IEEE International Conference on Robotics and Automation*, 2003.
- [4] Y. Bar-Shalom and T.E. Fortmann. *Tracking and Data Association*. Academic Press, 1988.
- [5] S.S. Blackman and R. Popoli. *Design and Analysis of Modern Tracking Systems*. Artech House Radar Library, 1999.
- [6] M. Bosse, P. Newman, J. Leonard, M. Soika, W. Feiten, and S. Teller. An Atlas framework for scalable mapping. In *IEEE International Conference on Robotics and Automation*, pages 1899–1906, 2003.
- [7] M. Bosse, P. Newman, J. Leonard, and S. Teller. Simultaneous localization and map building in large-scale cyclic environments using the Atlas framework. *International Journal of Robotics Research*, 23(12):1113–1140, 2004.
- [8] K.S. Chong and L. Kleeman. Feature-based mapping in real, large scale environments using an ultrasonic array. *International Journal of Robotics Research*, 18(1):3–19, 1999.
- [9] I.J. Cox and J.J. Leonard. Modeling a dynamic environment using a bayesian multiple hypothesis approach. *Artificial Intelligence*, 66(2):311–344, 1994.
- [10] A.J. Davison, Y.G. Cid, and N. Kita. Real-time 3D SLAM with



- wide-angle vision. In *IFAC/EURON Symposium on Intelligent Autonomous Vehicles*, 2004.
- [11] M. Deans and M. Hebert. Experimental comparison of techniques for localization and mapping using a bearing-only sensor. In *International Symposium on Experimental Robotics*, 2000.
  - [12] F. Dellaert. Square root SAM: Simultaneous location and mapping via square root information smoothing. In *Robotics: Science and Systems*, 2005.
  - [13] G. Dissanayake, H. Durrant-Whyte, and T. Bailey. A computationally efficient solution to the simultaneous localisation and map building (SLAM) problem. In *IEEE International Conference on Robotics and Automation*, volume 2, pages 1009–1014, 2000.
  - [14] A.I. Eliazar and R. Parr. DP-SLAM 2.0. In *IEEE International Conference on Robotics and Automation*, pages 1314–1320, 2004.
  - [15] C. Estrada, J. Neira, and J.D. Tardós. Hierarchical SLAM: Real-time accurate mapping of large environments. *IEEE Transactions on Robotics*, 21(4):588–596, 2005.
  - [16] R. Eustice, H. Singh, J. Leonard, M. Walter, and R. Ballard. Visually navigating the RMS Titanic with SLAM information filters. In *Robotics: Science and Systems*, 2005.
  - [17] R. Eustice, M. Walter, and J. Leonard. Sparse extended information filters: Insights into sparsification. In *IEEE/RSJ International Conference on Intelligent Robots and Systems*, pages 3281–3288, 2005.
  - [18] R.M. Eustice, H. Singh, and J.J. Leonard. Exactly sparse delayed-state filters. In *IEEE International Conference on Robotics and Automation*, pages 2417–2424, 2005.
  - [19] J. Folkesson and H. I. Christensen. Graphical SLAM - a self-correcting map. In *IEEE International Conference on Robotics and Automation*, pages 791–798, 2004.
  - [20] G. Grisetti, C. Stachniss, and W. Burgard. Improving grid-based SLAM with Rao-Blackwellized particle filters by adaptive proposals and selective resampling. In *IEEE International Conference on Robotics and Automation*, pages 667–672, 2005.
  - [21] J. Guivant and E. Nebot. Optimization of the simultaneous localization and map building algorithm for real time implementation. *IEEE Transactions on Robotics and Automation*, 17(3):242–257, 2001.
  - [22] J. Guivant and E. Nebot. Improving computational and memory requirements of simultaneous localization and map building algorithms. In *IEEE International Conference on Robotics and Automation*, pages 2731–2736, 2002.
  - [23] J.S. Gutmann and K. Konolige. Incremental mapping of large cyclic environments. In *IEEE International Symposium on Computational Intelligence in Robotics and Automation*, pages 318–325, 1999.
  - [24] D. Hähnel, W. Burgard, D. Fox, and S. Thrun. An efficient FastSLAM algorithm for generating maps of large-scale cyclic environments from raw laser range measurements. In *IEEE International Conference on Intelligent Robots and Systems*, pages 206–211, 2003.
  - [25] D. Hähnel, R. Triebel, W. Burgard, and S. Thrun. Map building with mobile robots in dynamic environments. In *IEEE International Conference on Robotics and Automation*, pages 1557–1563, 2003.
  - [26] S.J. Julier and J.K. Uhlmann. A non-divergent estimation algorithm in the presence of unknown correlations. In *American Control Conference*, volume 4, pages 2369–2373, 1997.
  - [27] J. Kim and S. Sukkarieh. Autonomous airborne navigation in unknown terrain environments. *IEEE Transactions on Aerospace and Electronic Systems*, 40(3):1031–1045, 2004.
  - [28] J. Knight, A. Davison, and I. Reid. Towards constant time SLAM using postponement. In *IEEE/RSJ International Conference on Intelligent Robots and Systems*, pages 405–413, 2001.
  - [29] K. Konolige. Large-scale map-making. In *National Conference on AI (AAAI)*, pages 457–463, 2004.
  - [30] J. Leonard and P. Newman. Consistent, convergent, and constant-time SLAM. In *International Joint Conference on Artificial Intelligence*, 2003.
  - [31] J.J. Leonard and H.F. Durrant-Whyte. *Directed Sonar Sensing for Mobile Robot Navigation*. Kluwer Academic Publishers, 1992.
  - [32] J.J. Leonard and R.J. Rikoski. Incorporation of delayed decision making into stochastic mapping. In *International Symposium On Experimental Robotics*, 2000.
  - [33] J.J. Leonard, R.J. Rikoski, P.M. Newman, and M.C. Bosse. Mapping partially observable features from multiple uncertain vantage points. *International Journal of Robotics Research*, 21(10–11):943–975, 2002.
  - [34] F. Lu and E. Milios. Globally consistent range scan alignment for environment mapping. *Autonomous Robots*, 4:333–349, 1997.
  - [35] I. Mahon and S. Williams. Three-dimensional robotic mapping. In *Australasian Conference on Robotics and Automation*, 2003.
  - [36] M. Montemero and S. Thrun. Simultaneous localization and mapping with unknown data association using FastSLAM. In *IEEE International Conference on Robotics and Automation*, pages 1985–1991, 2003.
  - [37] J. Neira and J.D. Tardós. Data association in stochastic mapping using the joint compatibility test. *IEEE Transactions on Robotics and Automation*, 17(6):890–897, 2001.
  - [38] J. Neira, J.D. Tardós, and J.A. Castellanos. Linear time vehicle relocation in SLAM. In *IEEE International Conference on Robotics and Automation*, 2003.
  - [39] P. Newman, D. Cole, and K. Ho. Outdoor SLAM using visual appearance and laser ranging. In *IEEE International Conference on Robotics and Automation*, 2006.
  - [40] J. Nieto, T. Bailey, and E. Nebot. Scan-SLAM: Combining EKF-SLAM and scan correlation. In *International Conference on Field and Service Robotics*, 2005.
  - [41] J. Nieto, J. Guivant, and E. Nebot. The hybrid metric maps (HYMMs): A novel map representation for DenseSLAM. In *IEEE International Conference on Robotics and Automation*, pages 391–396, 2004.
  - [42] M.A. Paskin. Thin junction tree filters for simultaneous localization and mapping. Technical report, University of California, Computer Science Division, 2002.
  - [43] Y. Rubner, C. Tomasi, and L.J. Guibas. A metric for distributions with applications to image databases. In *IEEE International Conference on Computer Vision*, 1998.
  - [44] J. Solà, A. Monin, M. Devy, and T. Lemaire. Undelayed initialization in bearing only SLAM. In *IEEE/RSJ International Conference on Intelligent Robots and Systems*, pages 2751–2756, 2005.
  - [45] J.D. Tardós, J. Neira, P.M. Newman, and J.J. Leonard. Robust mapping and localization in indoor environments using sonar data. *International Journal of Robotics Research*, 21(4):311–330, 2002.
  - [46] S. Thrun, W. Burgard, and D. Fox. A real-time algorithm for mobile robot mapping with applications to multi-robot and 3D mapping. In *International Conference on Robotics and Automation*, pages 321–328, 2000.
  - [47] S. Thrun, D. Koller, Z. Ghahmarani, H. Durrant-Whyte, and A. Ng. Simultaneous localization and mapping with sparse extended information filters: Theory and initial results. Technical report, Carnegie Mellon University, 2002.
  - [48] S. Thrun, Y. Liu, D. Koller, A. Ng, and H. Durrant-Whyte. Simultaneous localisation and mapping with sparse extended information filters. *International Journal of Robotics Research*, 23(7–8):693–716, 2004.
  - [49] I. Ulrich and I. Nourbakhsh. Appearance-based place recognition for topological localization. In *IEEE International Conference on Robotics and Automation*, pages 1023–1029, 2000.
  - [50] M. Walter, R. Eustice, and J. Leonard. A provably consistent method for imposing sparsity in feature-based SLAM information filters. In *International Symposium of Robotics Research*, 2005.
  - [51] C.C. Wang, C. Thorpe, and S. Thrun. On-line simultaneous localisation and mapping with detection and tracking of moving objects. In *IEEE International Conference on Robotics and Automation*, pages 2918–2924, 2003.
  - [52] Z. Wang, S. Huang, and G. Dissanayake. Implementation issues and experimental evaluation of D-SLAM. In *International Conference on Field and Service Robotics*, 2005.
  - [53] S.B. Williams. *Efficient Solutions to Autonomous Mapping and Navigation Problems*. PhD thesis, University of Sydney, Australian Centre for Field Robotics, 2001.